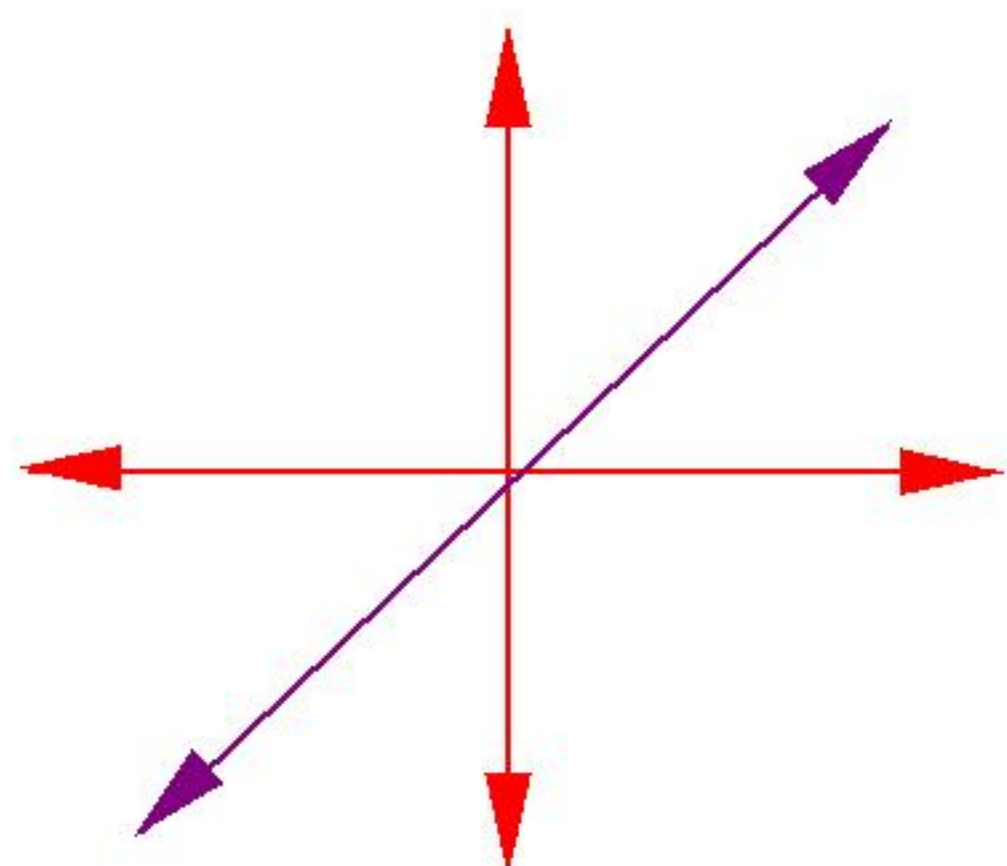


PARENT FUNCTION is the simplest form of a function

LINEAR

$$Y=MX+B$$

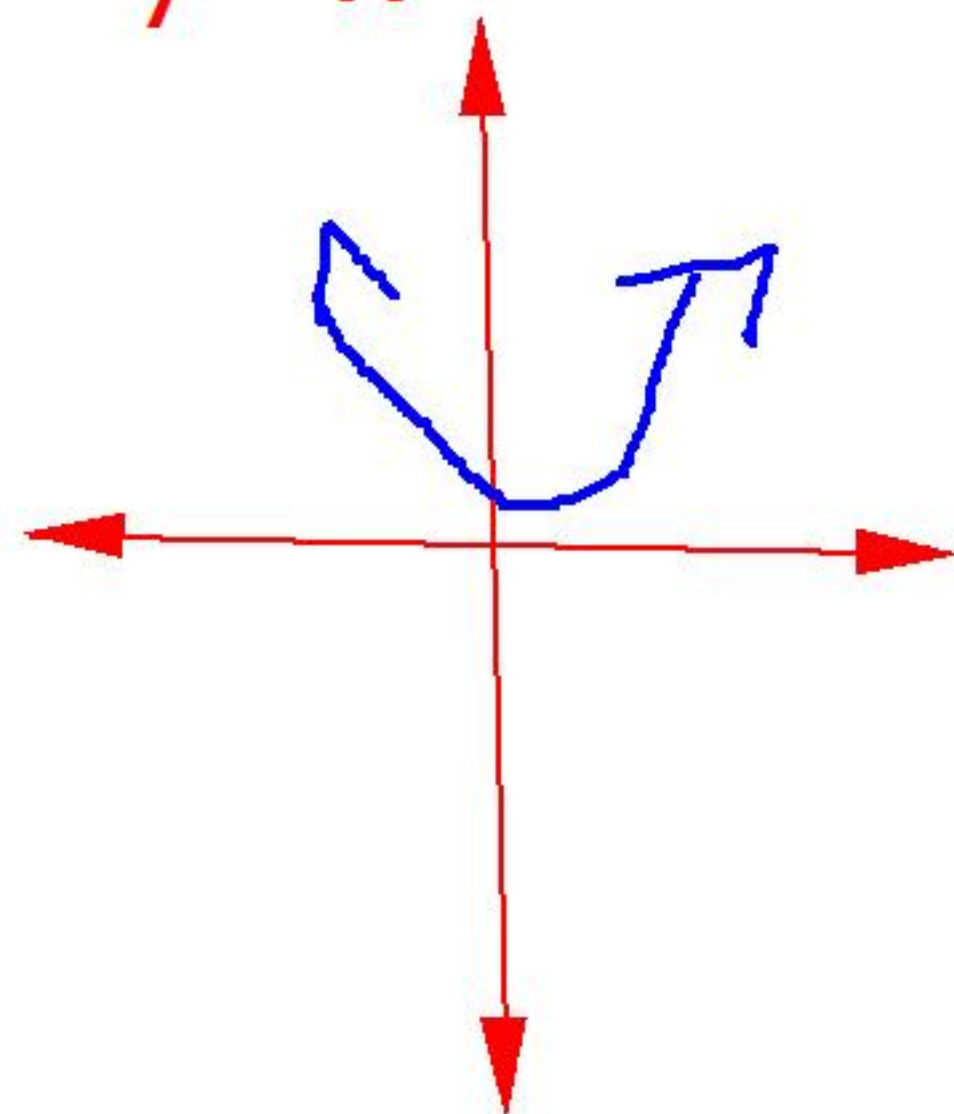
$$y=x$$



QUADRATIC

$$Y=AX^2$$

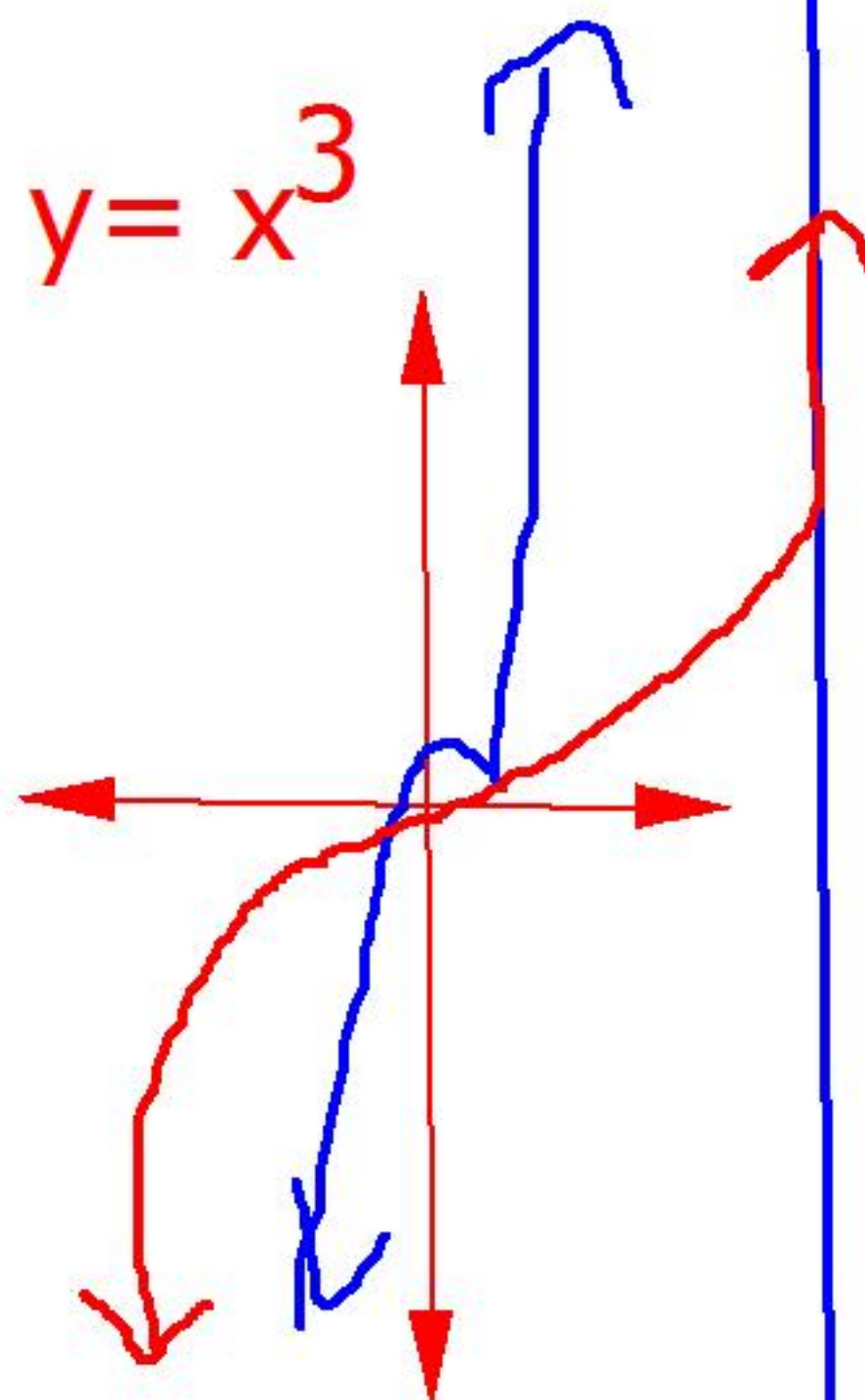
$$y=x^2$$



CUBIC

$$Y=X^3$$

$$y=x^3$$



EXPONENTIAL

$$Y=a^{\cancel{b}^X}$$

